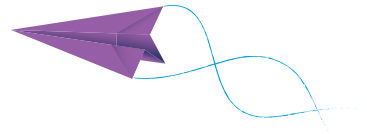


Call for Applications

Pragmatic Organization Dynamic Display (PODD) 2020-2021



Alt+Shift partners with intermediate school districts (ISDs) to provide initial training, co-constructed implementation planning, and subsequent follow-up support for *Pragmatic Organization Dynamic Display (PODD)*.

We are now accepting applications for partnerships that will begin during the 2020-2021 school year.

The application and acceptance process has three components:

1. Interested ISDs consult the resources below and submit an application.
2. Alt+Shift reviews applications and coordinates a follow-up meeting with the ISD leadership team at potential partnership sites.
3. Final determinations are made.

Partnerships are established with ISDs where:

- A need has been established using multiple data sources.
- Readiness to engage in a change effort is demonstrated through the existence of structures that support implementation of new practices.
- Strong commitment is present from stakeholders including ISD and local district administration, coaches/consultants, ancillary staff, teachers, and other practitioners.



Read about:
[PODD](#)



Learn what to expect:
[Anticipating Change](#)



Review the:
[Partnership Process](#)



Preview the application:
[Application Worksheet](#)



Complete:
[Online Application](#)