



Alt + Shift

Rethink the possible. Realize potential.

“Every learner has special needs.”

–Andy Hargreaves

Alt+Shift, encompassing Michigan’s Integrated Mathematics Initiative, strives to shift the way educators approach education by expanding perceptions of what is possible and promoting alternative practices that allow each of our learners to reach their full potential.

With a focus on collaboration with educators and positive impacts for students, Alt+Shift provides training, technical assistance and co-constructed implementation planning designed to create and sustain accessible educational environments in which students learn and thrive.



Alt+Shift, encompassing Michigan’s Integrated Mathematics Initiative, is an Individuals with Disabilities Education Act (IDEA) Grant Funded Initiative through the Michigan Department of Education, Office of Special Education.

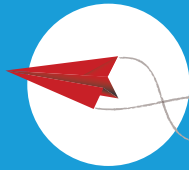
altshift.education
info@altshift.education

Comprehensive Literacy Instruction for Students With Significant Disabilities

No student is too anything to be able to read and write

Classroom and ancillary staff are taught how to structure daily literacy instruction for learners with significant disabilities and complex communication needs. This course is offered in Michigan through collaboration with the course authors, Dr. Karen Erickson and Dr. David Koppenhaver.

Autonomous communication requires literacy, and our goal must be to allow all learners to express what they want to communicate.



Foundations of Communication

All learners have the right to communicate

Foundations of Communication is for personnel who work in settings with learners with complex communication needs. Communication is a prerequisite for teaching and learning. Participants will be introduced to language development strategies, including core vocabulary (refers to the 20% of our vocabulary that we use 80% of the time when communicating) that can immediately help learners with complex communication needs communicate more effectively.



Enhancing Mathematics Instruction for Students With Learning Difficulties

Removing barriers to learning

This course, focused on instructional strategies, is for teams of special education and middle-grade math teachers and is intended to deepen understanding of the difficulties many learners have with mathematics.

Using content examples involving expressions and equations, participants learn an approach and strategies to support learners who struggle to learn mathematics — particularly those with learning disabilities.



Assistive Technology Journey

Road to independence

Assistive technology (AT), defined as anything that supports learners in doing things they would not otherwise be able to do, can provide the traction learners need to succeed but is often intimidating to educators who think of it as very specialized. Staff participating in the AT Journey will be empowered to individually consider, select and implement AT for their students, yet also recognize when additional perspectives (e.g., teacher, administrator, itinerant staff, paraprofessional, parent, etc.) are critical to this process.



Assistive Technology Lending Library

Discover the possibilities

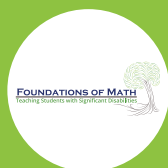
Michigan PK-12 public schools can explore and borrow a variety of assistive technologies (AT) available for learners with individualized education programs. This trial period will assist schools in determining effectiveness before acquiring the AT, discovering the potential of their learners.



Foundations of Math: Teaching Learners With Significant Disabilities

Math made possible for everyone

With the right supports and knowledge, all teachers and learners can engage in the teaching and learning of mathematics. This course includes all components of Foundations of Math with the addition of research and classroom video specific to learners with significant disabilities and complex communication needs. Educators in self-contained and center-based environments will experience approaches to assessment and instruction that will help learners develop meaningful mathematical understanding.



altshift.education